

Appendix no. 6 to the Interim Report on Implementation of the Land Acquisition and Resettlement Action Plan (LARAP) for Contract 3A.1
Construction of Vistula embankments in Cracow covering the implementation of 2 Works Contracts:

- **3A.1/1 – *Construction of Vistula embankments in Cracow - Section 1, Section 2***
- **3A.1/2 – *Construction of Vistula embankments in Cracow - Section 3***

PART A: 3A.1/1 – Construction of Vistula embankments in Cracow - Section 1, Section 2



Foto. 1. Condition of the area before the commencement of works – the left Vistula embankment planned for reconstruction *on section 1.1*, condition in the first decade of February 2021 (view downstream).



Foto. 2. Condition of the area before the commencement of works – the left Vistula embankment planned for reconstruction *on section 1.2*, condition in the first decade of February 2021 (view downstream).



Foto. 3. Condition of the area before the commencement of works – the left Vistula embankment planned for reconstruction *on section 1.3*, condition in the third decade of February 2021 (view downstream).



Foto. 4. Condition of the area before the commencement of works – the right embankment of Dłubnia planned for reconstruction *on section 1.4*, condition in the first decade of February 2021 (view downstream).



Foto. 5. Condition of the area before the commencement of works – left embankment of Dłubnia planned for reconstruction *on section 1.5*, condition in the first decade of February 2021 (view upstream).



Foto. 6. Condition of the area before the commencement of works – area of planned construction of the left embankment of Dłubnia *on section 1.6*, condition in the first decade of February 2021 (view upstream).



Foto. 7. Condition of the area before the commencement of works – the left Vistula embankment planned for reconstruction *on section 2* – upper part, condition in the third decade of February 2021 (view downstream).



Foto. 8. Condition of the area before the commencement of works – left Vistula embankment planned for reconstruction *on section 2* – lower part, condition in the third decade of February 2021 (view downstream).



Foto. 9. Tree and shrub cutting – left Vistula embankment *on section 2*, state in the second decade of February 2021 (view downstream).



Foto. 10. Construction site after cutting down trees and shrubs – left Vistula embankment *on section 1.3*, state in the third decade of March 2021 (view upstream).



Foto. 11. Storage yard on the right bank of the Dłubnia embankment – right bank of the Dłubnia *on section 1.4*, state in the third decade of March 2022 (view upstream).



Foto. 12. Storage yard on the left bank of the Vistula embankment – left bank of the Vistula *on section 2*, state in the third decade of October 2021 (view downstream).



Foto. 13. Construction site marking – right embankment of Dłubnia *on section 1.4*, condition in the third decade of February 2021 (view downstream).



Foto. 14. Construction site marking – right embankment of Dłubnia *on section 1.4*, condition in the third decade of May 2022 (view upstream).



Foto. 15. Public road marking in the vicinity of the construction site – the right embankment of the Vistula River *on section 1.1*, condition in the third decade of September 2022 (view downstream).



Foto. 16. Public road marking in the vicinity of the construction site – the right embankment of the Vistula River *on section 1.1*, condition in the third decade of June 2022 (view downstream).



Foto. 17. Securing dangerous places - right bank of Dłubnia *on section 1.4*, condition in the second decade of October 2022 (view downstream).



Foto. 18. Securing dangerous places – left embankment of Dłubnia *on section 1.5*, condition in the third decade of September 2022 (view downstream).



Foto. 19. Securing dangerous places under the power line – right bank of Dłubnia *on section 1.4*, state in the third decade of October 2021 (view upstream).



Foto. 20. Securing dangerous places under the power line – left Vistula embankment *on section 2*, state in the third decade of October 2022 (view downstream).



Foto. 21. Securing trees and shrubs not planned for cutting – left Vistula embankment *on section 1.3*, condition in the second decade of August 2022 (view upstream).



Foto. 22. Securing trees and shrubs not planned for cutting – left Vistula embankment *on section 2*, state in the second decade of April 2022 (view upstream).



Foto. 23. Maintaining the cleanliness of public roads in the vicinity of the construction site – right bank of the Dłubnia River *on section 1.4*, condition in the third decade of March 2022 (view towards the west).



Foto. 24. Maintaining the cleanliness of public roads in the vicinity of the construction site – left bank of the Dłubnia River *on section 1.5*, condition in the third decade of May 2022 (view downstream).



Foto. 25. Removing the topsoil layer – left Vistula embankment *on section 1.3*, condition in the third decade of July 2021 (view upstream).



Foto. 26. Removing the topsoil layer – left Vistula embankment *on section 2*, condition in the third decade of July 2021 (view upstream).



Foto. 27. Securing topsoil heaps – right embankment of Dłubnia *on section 1.4*, condition in the third decade of May 2022 (view downstream).



Foto. 28. Securing topsoil heaps – left Vistula embankment *on section 2*, state in the third decade of July 2021 (view upstream).



Foto. 29. Construction of a cement-bentonite barrier at the base of the embankment – the right embankment of Dłubnia *on section 1.4*, condition in the second decade of August 2021 (view upstream).



Foto. 30. Installation for the production of cement-bentonite mixture – left bank of the Vistula River *on section 2*, condition in the third decade of June 2021 (view downstream).



Foto. 31. Construction of a sheet pile wall at the base of the embankment – left Vistula embankment *on section 1.1*, state in the first decade of April 2022 (view downstream).



Foto. 32. Execution of the cap on the sheet pile wall at the base of the embankment – left Vistula embankment *on section 1.1*, condition in the third decade of July 2022 (view upstream).



Foto. 33. Reconstruction of the embankment culvert - left embankment of the Vistula River *on section 2*, condition in the second decade of May 2022 (view towards the inter-embankment area).



Foto. 34. Construction of the embankment culvert - left embankment of Dłubnia *on section 1.6*, condition in the third decade of August 2022 (view towards the embankment).



Foto. 35. Works related to the reconstruction of the gas pipeline network – the right embankment of Dłubnia *on section 1.4*, condition in the second decade of October 2021 (view downstream).



Foto. 36. Works related to the reconstruction of the gas pipeline network – the left embankment of the Vistula River *on section 1.2*, state in the third decade of March 2022 (view upstream).



Foto. 37. Formation of flood embankment slopes – left Vistula embankment *on section 1.2*, condition in the third decade of October 2021 (view downstream).



Foto. 38. Formation of flood embankment slopes – left embankment of Dłubnia *on section 1.5*, condition in the third decade of July 2022 (view upstream).



Foto. 39. Leveling the slopes of the flood embankment – the left embankment of the Vistula River *on section 1.1*, condition in the second decade of June 2022 (view upstream).



Foto. 40. Leveling the slopes of the flood embankment – left embankment of Dłubnia *on section 1.6*, condition in the second decade of October 2022 (view downstream).



Foto. 41. Laying bentomat on the slope of the flood embankment – left Vistula embankment *on section 1.2*, condition in the third decade of October 2021 (view downstream).



Foto. 42. Laying bentomat on the slope of the flood embankment – right embankment of Dłubnia *on section 1.4*, condition in the third decade of March 2021 (view downstream).



Foto. 43. Topsoiling of flood embankment slopes – left Vistula embankment *on section 1.3*, condition in the third decade of May 2022 (view upstream).



Foto. 44. Topsoiling of flood embankment slopes – left Vistula embankment *on section 2*, condition in the third decade of July 2022 (view upstream).



Foto. 45. Road construction on the top of the flood embankment – left embankment of Dłubnia *on section 1.6*, condition in the third decade of November 2022 (view downstream).



Foto. 46. Construction of a road on the top of the flood embankment – left Vistula embankment *on section 2*, state in the third decade of November 2022 (view downstream).



Foto. 47. Growth of grasses sown on the slope of the flood embankment – left embankment of the Vistula River *on section 1.1*, state in the third decade of November 2022 (view downstream).



Foto. 48. Growth of grasses sown on the slope of the flood embankment – left Vistula embankment *on section 1.2*, state in the third decade of August 2022 (view upstream).



Foto. 49. Condition of the construction site in the last quarter of the works implementation period – rebuilt left Vistula embankment *on section 1.1*, condition in the third decade of December 2022 (view downstream).



Foto. 50. Condition of the construction site in the last quarter of the works implementation period – rebuilt left Vistula embankment *on section 1.2*, condition in the third decade of December 2022 (view downstream).



Foto. 51. Condition of the construction site in the last quarter of the works implementation period – rebuilt left Vistula embankment *on section 1.3*, condition in the third decade of December 2022 (view downstream).



Foto. 52. Condition of the construction site in the last quarter of the works implementation period – rebuilt right embankment of Dłubnia *on section 1.4*, condition in the third decade of December 2022 (view upstream).



Foto. 53. Condition of the construction site in the last quarter of the works implementation period – rebuilt left embankment of Dłubnia *on section 1.5*, condition in the third decade of December 2022 (view upstream).



Foto. 54. Condition of the construction site in the last quarter of the works implementation period – newly built left embankment of Dłubnia *on section 1.6*, condition in the third decade of December 2022 (view upstream).



Foto. 55. Condition of the area after completion of works – rebuilt left Vistula embankment *on section 2* – upper part, condition in the third decade of December 2022 (view downstream).



Foto. 56. Condition of the area after completion of works – rebuilt left Vistula embankment *on section 2* – lower part, condition in the third decade of December 2022 (view downstream).

PART B: 3A.1/2 – Construction of Vistula embankments in Cracow - Section 3



Foto. 57. Condition of the area before the commencement of works – the right Vistula embankment planned for reconstruction *on section 3.1*, condition in the first decade of February 2021 (view upstre).



Foto. 58. Condition of the area before the commencement of works – the right Vistula embankment planned for reconstruction *on section 3.2a*, condition in the first decade of February 2021 (view upstream).



Foto. 59. Condition of the area before the commencement of works – the right Vistula embankment planned for reconstruction *on section 3.2b*, condition in the first decade of February 2021 (view upstream).



Foto. 60. Condition of the area before the commencement of works – the right Vistula embankment planned for reconstruction *on section 3.3* – upper part, condition in the first decade of February 2021 (view upstream).



Foto. 61. Condition of the area before the commencement of works – the right Vistula embankment planned for reconstruction *on section 3.3* – lower part, condition in the first decade of February 2021 (view upstream).



Foto. 62. Condition of the area before the commencement of works – the right Vistula embankment planned for reconstruction *on section 3.4*, condition in the first decade of February 2021 (view upstream).



Foto. 63. Construction site after cutting down trees and shrubs – the right Vistula embankment *on section 3.4*, condition in the third decade of February 2021 (view upstream).



Foto. 64. Tidying up the construction site after cutting down trees and shrubs – the right Vistula embankment *on section 3.2b*, condition in the third decade of February 2021 (view downstream).



Foto. 65. Construction camp on the right bank of the Vistula embankment – the right bank of the Vistula *on section 3.4*, state in the third decade of July 2021 (view towards the west).



Foto. 66. Storage yard on the right bank of the Vistula embankment – the right bank of the Vistula *on section 3.4*, state in the third decade of September 2021 (view upstream).



Foto. 67. Construction site marking – the right Vistula embankment *on section 3.3*, condition in the third decade of June 2021 (view downstream).



Foto. 68. Construction site marking – the right Vistula embankment *on section 3.1*, condition in the second decade of March 2021 (view downstream).



Foto. 69. Public road marking in the vicinity of the construction site – the right Vistula embankment *on section 3.4*, condition in the second decade of April 2021 (view downstream).



Foto. 70. Public road marking in the vicinity of the construction site – the right Vistula embankment *on section 3.4*, state in the first decade of April 2022 (view downstream).



Foto. 71. Securing dangerous places – right bank of the Vistula *on section 3.4*, state in the third decade of April 2021 (view upstream).



Foto. 72. Securing dangerous places – the right embankment of the Vistula River *on section 3.3*, condition in the third decade of July 2021 (view downstream).



Foto. 73. Securing dangerous places under the power line – the right embankment of the Vistula River *on section 3.3*, state in the third decade of July 2021 (view upstream).



Foto. 74. Securing dangerous places under the power line – the right embankment of the Vistula River *on section 3.4*, state in the third decade of September 2022 (view downstream).



Foto. 75. Securing dangerous places in the vicinity of buildings – the right embankment of the Vistula River *on section 3.3*, condition in the third decade of March 2023 (view upstream).



Foto. 76. Securing dangerous places in the vicinity of buildings – the right embankment of the Vistula River *on section 3.3*, condition in the third decade of June 2023 (view downstream).



Foto. 77. Securing trees and shrubs not planned for cutting – the right Vistula embankment *on section 3.1*, condition in the second decade of April 2022 (view downstream).



Foto. 78. Securing trees and shrubs not planned for felling and preventive pruning of tree branches – the right Vistula embankment *on section 3.2a*, condition in the second decade of April 2022 (view upstream).



Foto. 79. Securing trees and shrubs not planned for cutting – the right Vistula embankment *on section 3.2b*, state in the third decade of March 2022 (view downstream).



Foto. 80. Securing the tree stand within the boundaries of Fort 50a Lasówka (object entered in the register of monuments) - the right bank of the Vistula River *on section 3.2a*, condition in the third decade of January 2023 (view downstream).



Foto. 81. No impact of works on the condition of natural habitats in the area of the Vistula oxbow lake in the vicinity of the town of Brzegi – the right Vistula embankment *on section 3.4*, condition in the third decade of June 2022 (view downstream).



Foto. 82. Rebuilt historic chapel on the Vistula River embankment – right bank of the Vistula River *on section 3.3*, state in the third decade of August 2023 (view downstream).



Foto. 83. Maintaining the cleanliness of public roads in the vicinity of the construction site – right bank of the Vistula *on section 3.4*, condition in the second decade of April 2023 (view towards the west).



Foto. 84. Maintaining the cleanliness of public roads in the vicinity of the construction site – right bank of the Vistula River *on section 3.4*, state in the third decade of November 2022 (view downstream).



Foto. 85. Removing the topsoil layer – the right Vistula embankment *on section 3.4*, state in the first decade of July 2022 (view upstream).



Foto. 86. Removing the topsoil layer – the right Vistula embankment *on section 3.2a*, condition in the third decade of July 2021 (view downstream).



Foto. 87. Securing topsoil heaps – the right Vistula embankment *on section 3.2a*, condition in the third decade of April 2021 (view upstream).



Foto. 88. Securing topsoil heaps – the right Vistula embankment *on section 3.2a*, condition in the third decade of June 2021 (view downstream).



Foto. 89. Construction of a cement-bentonite barrier at the base of the embankment – the right embankment of the Vistula River *on section 3.2a*, condition in the third decade of June 2021 (view downstream).



Foto. 90. Installation for producing cement-bentonite mixture – right bank of the Vistula River *on section 3.3*, condition in the third decade of June 2021 (view upstream).



Foto. 91. Construction of a sheet pile wall securing the reconstructed embankment culvert – the right embankment of the Vistula River *on section 3.2a*, condition in the third decade of September 2021 (view upstream).



Foto. 92. Sheet pile wall securing the reconstructed embankment culvert – right embankment of the Vistula River *on section 3.4*, condition in the second decade of May 2021 (view downstream).



Foto. 93. Reconstruction of the embankment culvert – the right embankment of the Vistula River *on section 3.4*, condition in the third decade of May 2021 (view downstream).



Foto. 94. Reconstruction of the embankment culvert – the right embankment of the Vistula River *on section 3.4*, condition in the third decade of July 2021 (view upstream).



Foto. 95. Construction of a retaining wall – the right Vistula embankment *on section 3.2a*, state in the second decade of November 2021 (view downstream).



Foto. 96. Construction of a retaining wall – the right Vistula embankment *on section 3.3*, state in the first decade of May 2022 (view downstream).



Foto. 97. Works related to the reconstruction of the gas pipeline network – the right embankment of the Vistula River *on section 3.3*, condition in the third decade of February 2022 (view towards the inter-embankment area).



Foto. 98. Works related to the reconstruction of the gas pipeline network – the right embankment of the Vistula River *on section 3.3*, state in the first decade of March 2022 (view towards the embankment).



Foto. 99. Transport of earth masses for the reconstruction of the flood embankment – the right embankment of the Vistula River *on section 3.2a*, state in the first decade of July 2022 (view downstream).



Foto. 100. Transport of earth masses for the reconstruction of the flood embankment – the right embankment of the Vistula River *on section 3.2b*, condition in the third decade of July 2022 (view downstream).

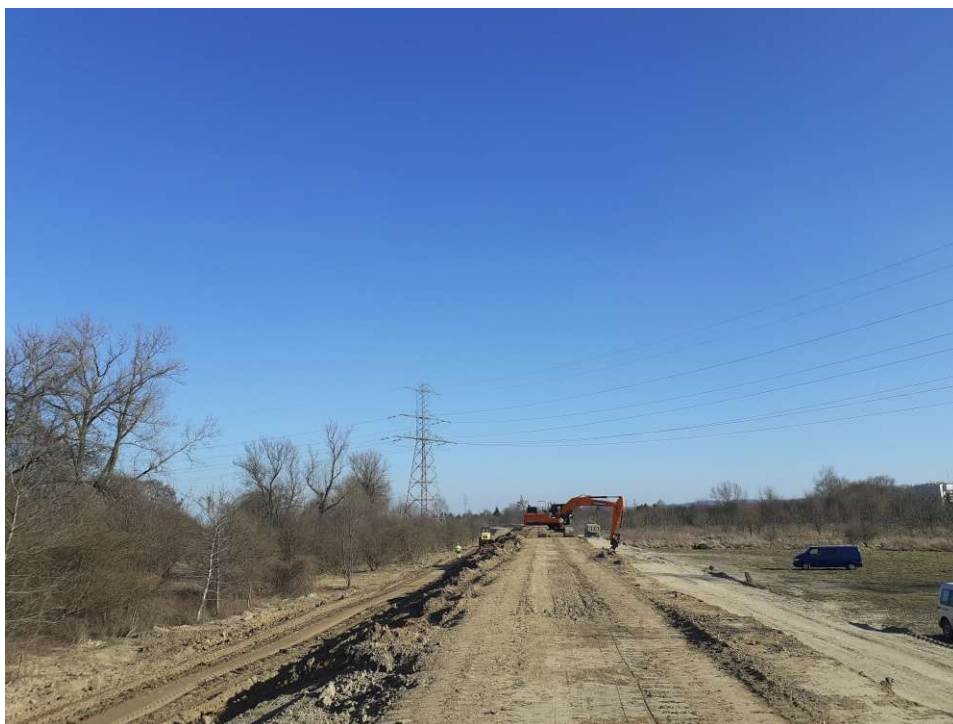


Foto. 101. Formation of flood embankment slopes – right Vistula embankment *on section 3.2a*, state in the third decade of March 2022 (view downstream).



Foto. 102. Formation of flood embankment slopes – right Vistula embankment *on section 3.2a*, state in the first decade of September 2022 (view downstream).



Foto. 103. Leveling the slopes of the flood embankment – the right embankment of the Vistula River *on section 3.3*, state in the third decade of February 2022 (view upstream).



Foto. 104. Leveling the slopes of the flood embankment – the right embankment of the Vistula River *on section 3.4*, state in the first decade of September 2022 (view downstream).



Foto. 105. Laying bentomat on the slope of the flood embankment – the right embankment of the Vistula River *on section 3.3*, state in the first decade of September 2022 (view upstream).



Foto. 106. Laying bentomat on the slope of the flood embankment – the right embankment of the Vistula River *on section 3.2a*, condition in the third decade of September 2021 (view downstream).



Foto. 107. Topsoiling of flood embankment slopes – right Vistula embankment *on section 3.2a*, condition in the third decade of June 2022 (view downstream).



Foto. 108. Topsoiling of flood embankment slopes – right Vistula embankment *on section 3.3*, condition in the third decade of May 2023 (view downstream).



Foto. 109. Construction of a road on the top of the flood embankment – the right embankment of the Vistula River *on section 3.2a*, condition in the second decade of October 2022 (view downstream).



Foto. 110. Construction of a road on the top of the flood embankment – the right embankment of the Vistula River *on section 3.1*, state in the third decade of March 2023 (view downstream).



Foto. 111. Growth of grasses sown on the slope of the flood embankment – the right embankment of the Vistula River *on section 3.3*, state in the second decade of July 2023 (view upstream).



Foto. 112. Growth of grasses sown on the slope of the flood embankment – the right embankment of the Vistula River *on section 3.1*, state in the third decade of November 2022 (view downstream).



Foto. 113. Condition of the construction site in the last quarter of the works implementation period – rebuilt right Vistula embankment *on section 3.1*, condition in the third decade of September 2023 (view downstream).



Foto. 114. Condition of the construction site in the last quarter of the works implementation period – rebuilt right Vistula embankment *on section 3.2a*, condition in the third decade of September 2023 (view downstream).



Foto. 115. Condition of the construction site in the last quarter of the works implementation period – rebuilt right Vistula embankment *on section 3.2b*, condition in the third decade of September 2023 (view downstream).



Foto. 116. Condition of the construction site in the last quarter of the works implementation period – rebuilt right Vistula embankment *on section 3.3 – upper part*, condition in the third decade of September 2023 (view downstream).

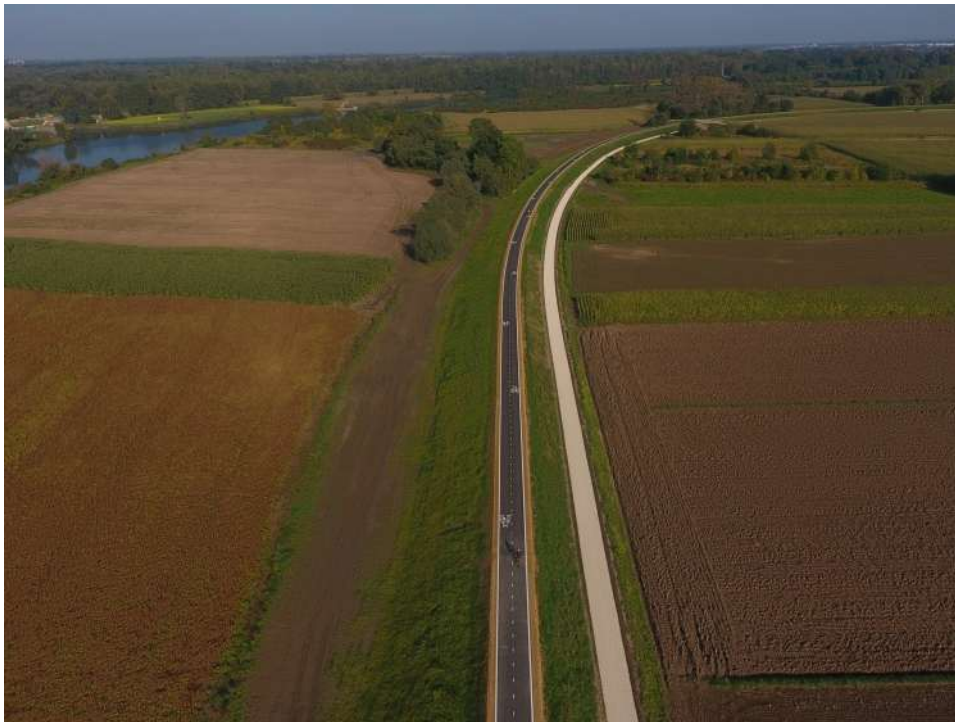


Foto. 117. Condition of the construction site in the last quarter of the works implementation period – rebuilt right Vistula embankment *on section 3.3* – lower part, condition in the third decade of September 2023 (view downstream).



Foto. 118. Condition of the construction site in the last quarter of the works implementation period – rebuilt right Vistula embankment *on section 3.4*, condition in the third decade of September 2023 (view downstream).